

GDM-82xx FIRMWARE UPDATE PROCEDURE

VER.1.00 2008-02-25

1. Software, hardware requirements

- One unit of GDM-8255A or GDM-8251A
- GDM-8255A or GDM-8251A Firmware (*.hex).
- CAL Key *1.
- One PC installed with windows 98、 windows 2000 or windows XP
- RS-232 cable one female-female, simple RS232 null-modem cable without handshaking.
- Firmware updates (Windows serial downloader v6.7, executable file named “wsd_v6_7.exe”)

2. Software update installation (if the update is installed already, please skip this step).

Step one:

Executable the installation file, named “wsd_v6_7.exe” provided in the CD, double click on the file, and begin the installation process.

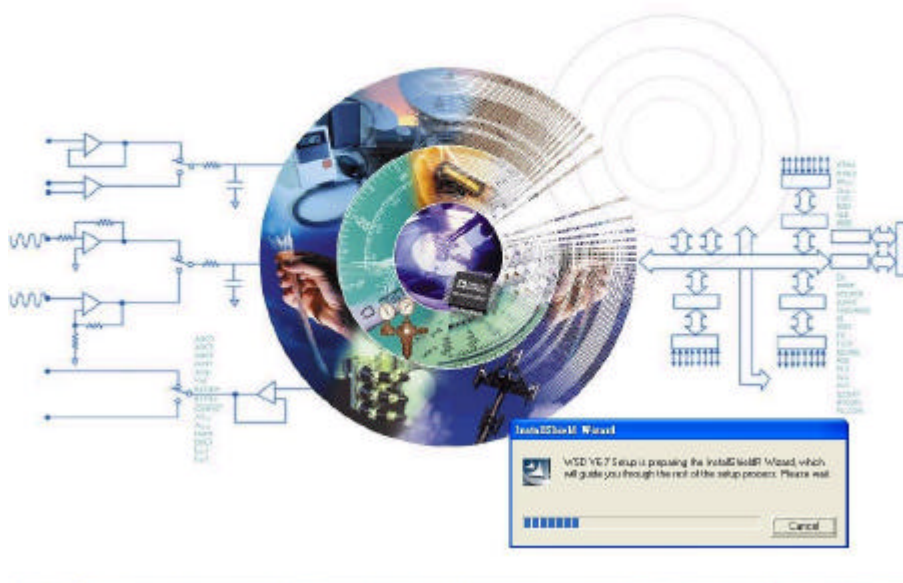


Figure 2-1

Step two:

Click on “Next” to continue.

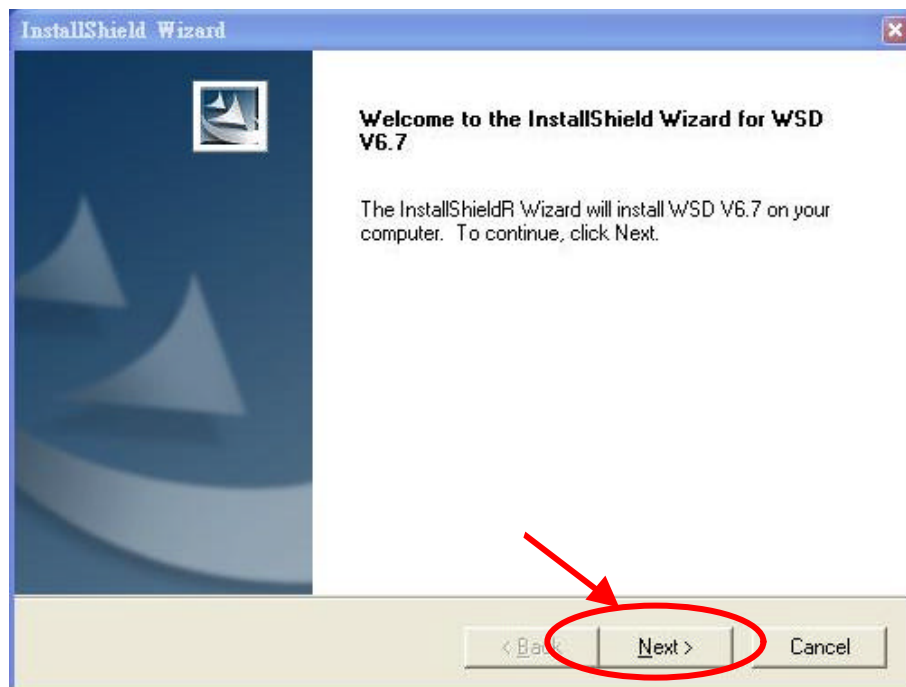


Figure 2-2

Step three:

Please select “I accept” , then click on “Next” to continue.

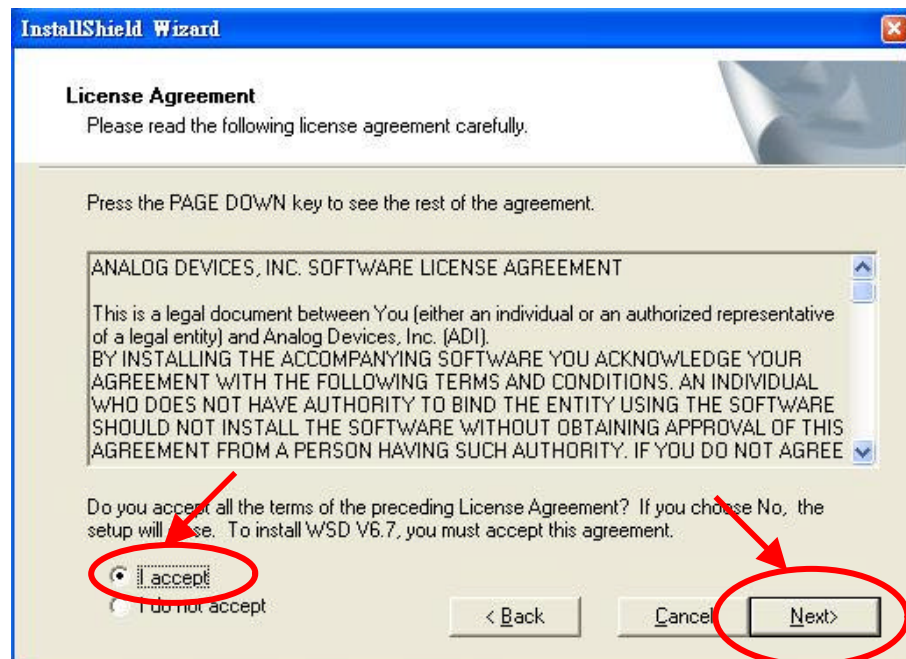


Figure 2-3

Step four:

Installation path can use default, then click on “Next” again to continue.

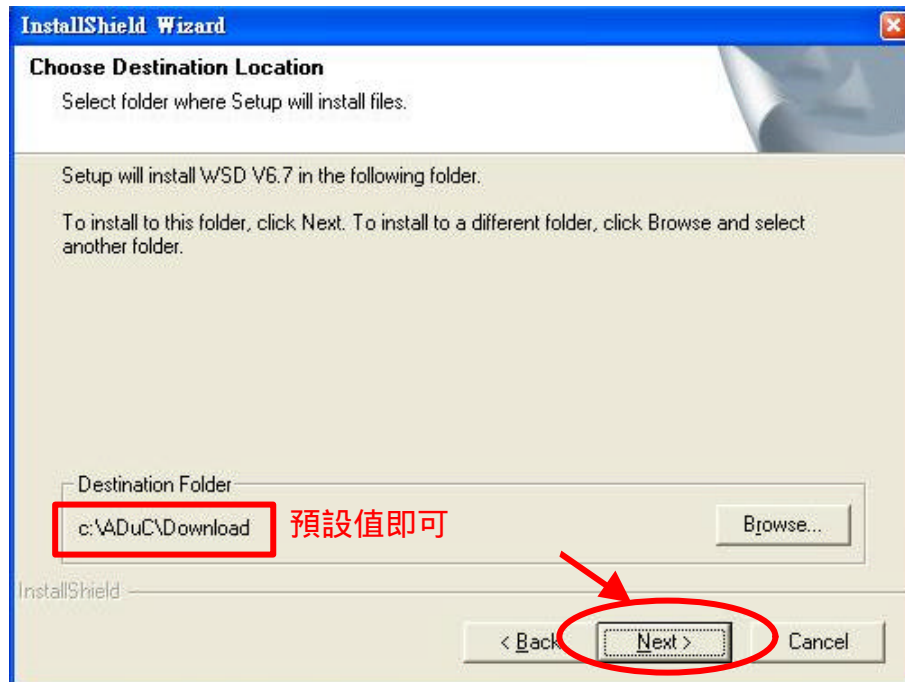


Figure 2-4

Step five:

At this time you should be looking at the screen of installation process. When the installation ends, please click on “Finish” to complete the installation process as shown on Figure 2-6.

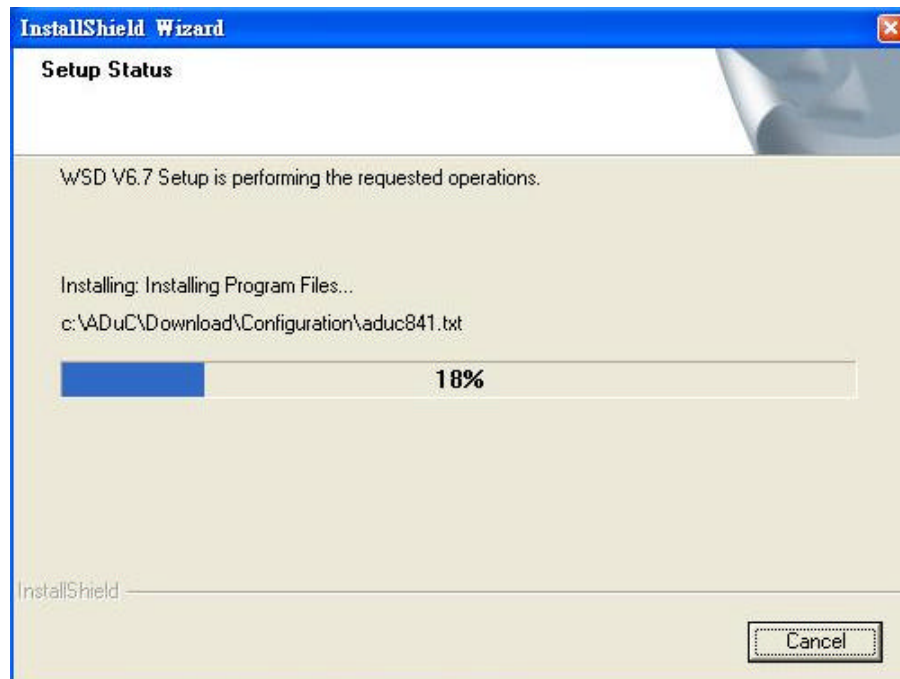


Figure 2-5

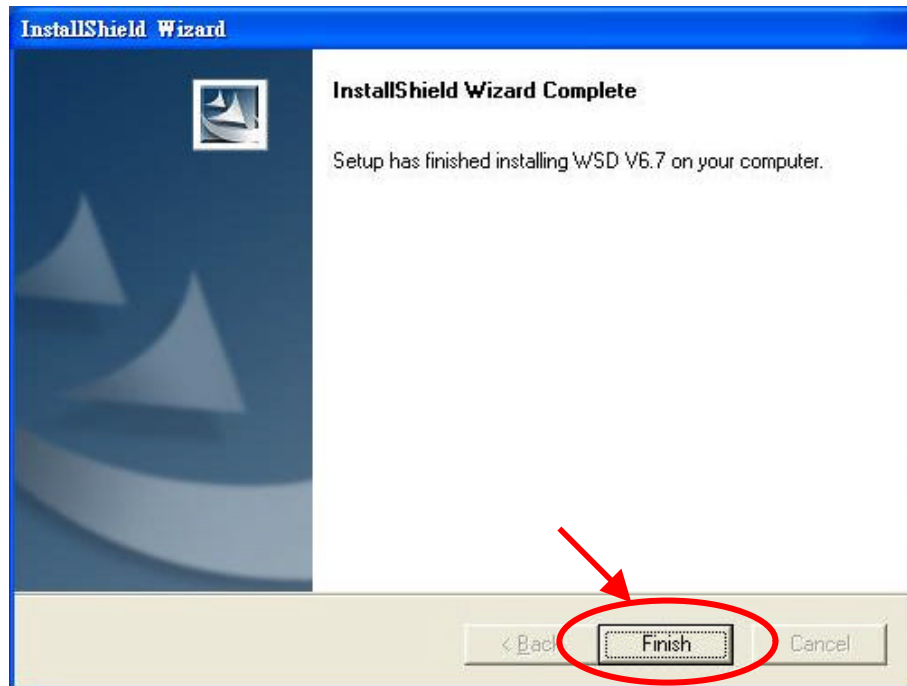


Figure 2-6

3. Hardware connecting

Step one:

Please confirm that GDM-8255A or GDM-8251A is powered off, then insert the CAL Key into the CAL Key Port of GDM-8255A or GDM-8251A. Please also make sure the CAL Key is inserted correctly. Please refer to Figure 3-1.

Rear Panel Overview

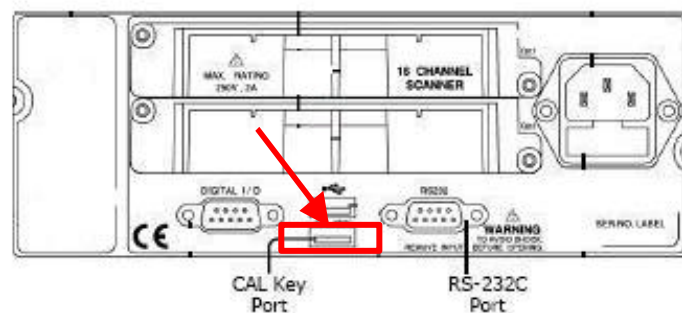


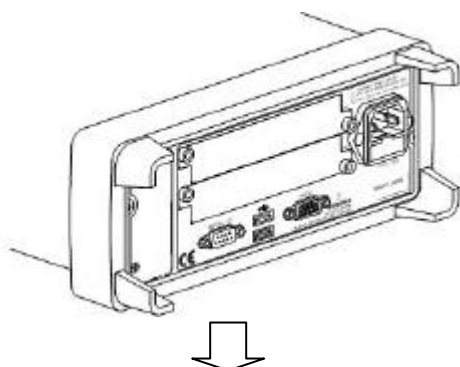
Figure 3-1

Step two:

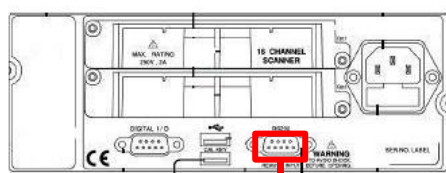
Please connect the RS-232 cable from GDM-8255A or GDM-8251A to the Com

Port of your PC. Please refer to Figure 3-2.

GDM-8255A or GDM-8251A



Rear Panel Overview



RS-232 Cable



Figure 3-2

Step three:

Please confirm again the CAL Key is inserted corrected, and then power on GDM-8255A or GDM-8251A. (Note: If the key is mistakenly inserted into USB port, it may lead to the functional defection of the USB port.) At this time, there should be nothing shown on the display, which is normal. If there is anything shown, it means that GDM-8255A or GDM-8251A is not in the correct burning model. Please make sure the CAL Key is inserted in the right place, and then perform the PC software updating.

4. Software update steps

Step one:

Please begin the software updating first. Please click on “Start” → “Program” → “ADuC” → “WSD” to begin the software updating.

Step two:

Please click on “Configuration” to confirm settings.



Figure 4-1

Step three:

Please be aware of the Com Port that GDM-8255A or GDM-8251A is connected to and make sure that you are with the same computer. (For example, if the computer is using COM1, then the COM1's port needs to be selected in the software updating process.) Other settings please keep the same as shown in Figure 4-2. It is important to keep the settings as the same as shown in Figure 4-2. Please do not make any change to prevent the updating failure. Now click on “OK” to finish configuration. (Note: this process should be done only once on a computer).

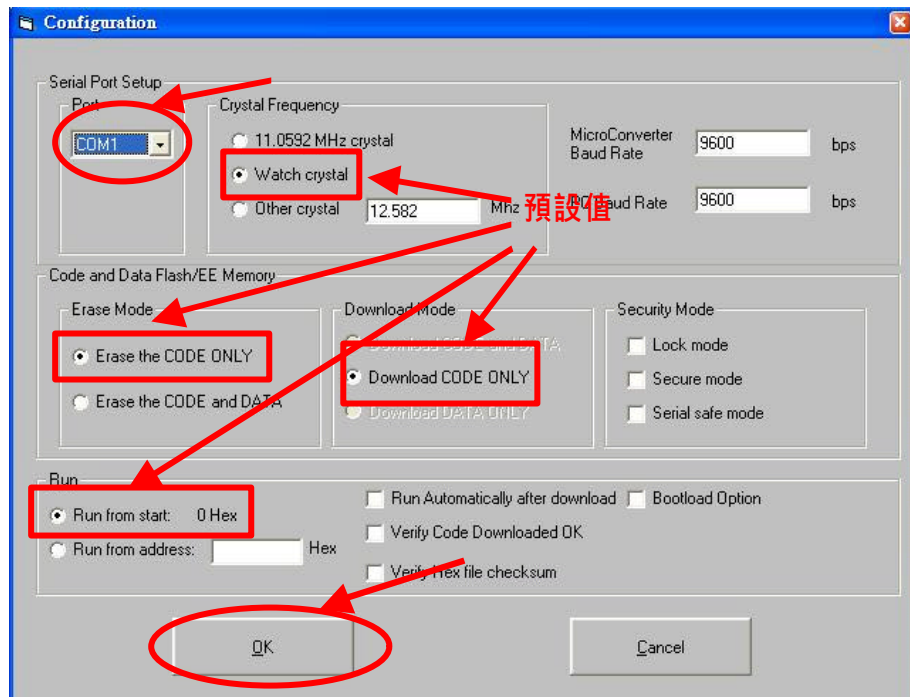


Figure 4-2

Step four:

Click on “Download” and prepare to update the software. If Com Port’ s setting is not correct either GDM-8255A or GDM-8251A is not in the correct burning model, the error message will be shown, as in Figure 4-4. Please go back to previous steps and make sure settings are correct, GDM-8255A or GDM-8251A is powered on, cables are well plugged in, or RS232 cable is correct .



Figure 4-3

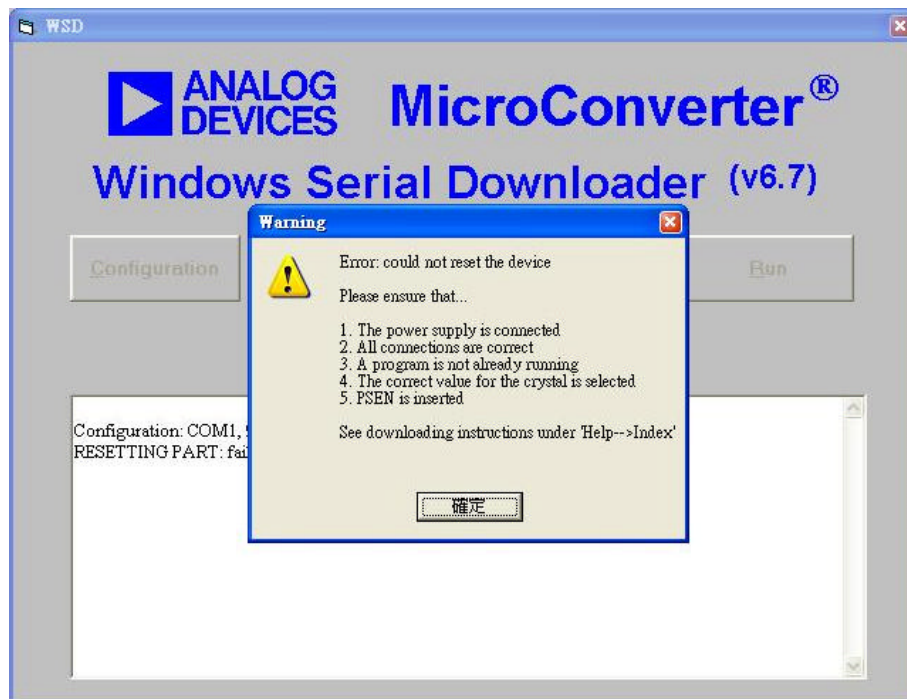


Figure 4-4

Step five:

Please select the right software (*.hex) that is intended to be updated. The example in Figure 4-5 shown the software is placed on desktop. However, you should select where the updating software is downloaded to, and then click on “Start” to begin the burning process.

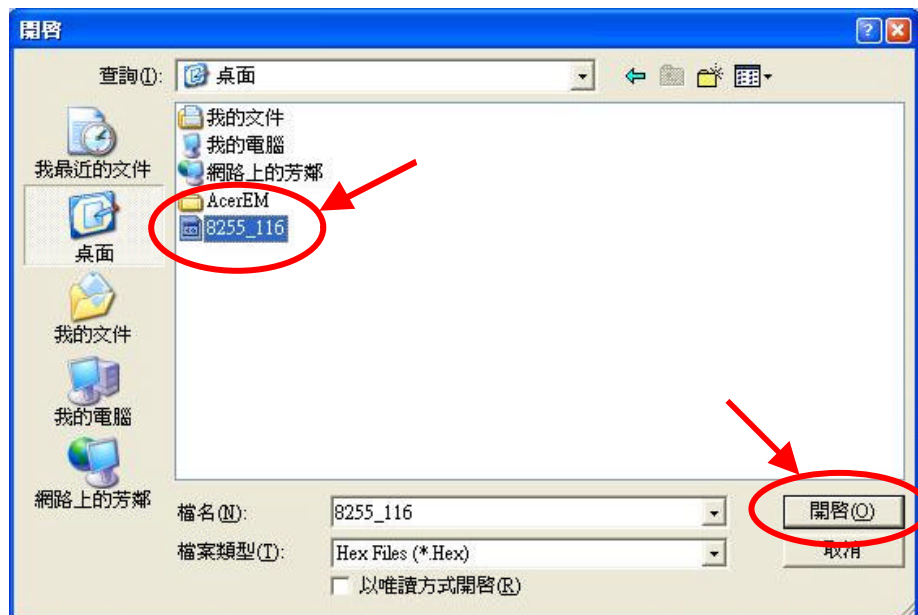


Figure 4-5

Step six:

Please confirm the CheckSum is correct upon completion. If nothing wrong, then click on “Run”. GDM-8255A or GDM-8251A should restart. After restarting, please check the software version of GDM-8255A or GDM-8251A is updated to the newer version. Finally, unplug the CAL Key, then close all windows to finish the software updating process.

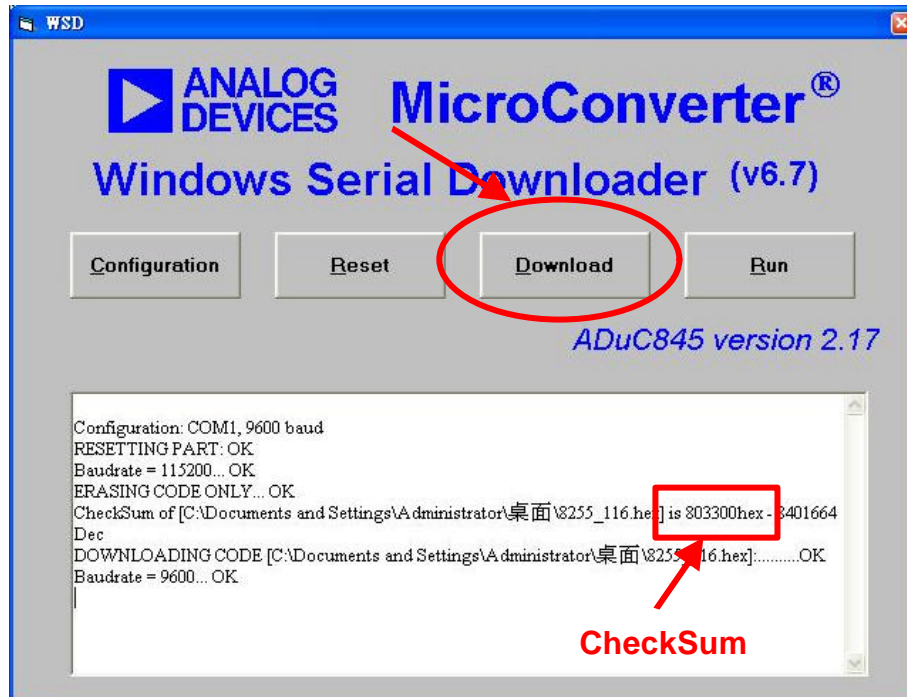


Figure 4-6